



Real-TimePhoto Showcasing Tool For Event Photography

User Guide



Real-TimePhoto Showcasing Tool For Event Photography

Table of Contents

Installation Requirements	3
Installing SplashCase™	3
Features Overview	4
SplashCase™ Components	5
Display Grid.....	6
Background and Holding Images.....	7
Text Options.....	8

Installation Requirements

Minimal Windows™ System Requirements

- Windows™ XP™, Vista™, or Windows 7™; 32 or 64-bit
- 1GHz Atom™ processor or higher (1.6 GHz Intel Core Duo™ or higher Recommended)
- 512 MB RAM (1 GB Recommended)
- 35 MB free hard disk space for installation

Minimal Mac OS System Requirements

- Mac™ OS X™ 10.4.6 or higher
- Administrator rights for installation
- G4 PPC or Intel Processor (1.6 GHz Intel Core Duo™ or higher Recommended)
- 512 MB RAM (1 GB Recommended)
- 35 MB free hard disk space for installation

Installing SplashCase™

Windows™ Installation

- Download the latest installer from the [Allen Christopher website \(http://www.AllenChristopher.com/download-splashcase.php\)](http://www.AllenChristopher.com/download-splashcase.php)
- Unpack and run the installer, SplashCase Installer.exe
- Follow the installer directions, step by step

Mac OS™ Installation

- Download the latest installer from the [Allen Christopher website \(http://www.AllenChristopher.com/download-splashcase.php\)](http://www.AllenChristopher.com/download-splashcase.php)
- Unpack and open the disk image, SplashCase™ Installer.dmg
- Run the installer
- Follow the installer directions, step by step

Should you run into any difficulties with your installation, visit the [Allen Christopher Support website](#) or contact us at Support@AllenChristopher.com.





SplashCase™ Real-Time Photo Showcasing Software

**A picture is worth a thousand words;
SplashCase™ has a lot to say.**

SplashCase™ makes it easy to create a custom slideshow layout and showcase your photos as you shoot them.

SplashCase™ Can Showcase Your Photos as You Shoot Them:

Feature Set

- Real-Time Photo Display System
- Run up to two slideshows simultaneously.
- Utilize any monitors attached to your computer.
- Flexible Slideshow layouts: one-up to ten photos per row.
- Easily add drop shadows to your slideshow photos.
- Configure your slideshow pages with your headers/logos.
- Display file names on your images, with/without file suffix.
- Full control over text: Font, weight, size, color, and backing
- Feature incoming images(one-up).

How SplashCase™ Works

It's up to you on how you move your photos to SplashCase™—Tethering, copying over a network, or manually dragging and dropping your photos into a SplashCase™ hot folder, you have the flexibility to choose the best method to suit your situation.

The terms *Hot Folder* or *Drop Folder* are often used interchangeably. For the sake of clarity, we refer to either in SplashCase™ as **Process Folders**, because these folders are often tied to several processes within SplashCase™.



Real-Time Showcase for Event Photography

Not Registered

Version 1.0 Build 43

©2011 Allen Christopher, Inc.



SplashCase™ Registration and Control Window

It takes just a minute to get SplashCase™ up and running. Let's get started!

Activate SplashCase™

If you haven't activated SplashCase™, the first window you'll see is the Activation Window.

If you purchased a license, your activation will have been sent via email. Be sure to enter the activation information EXACTLY AS IT IS SHOWN IN YOUR EMAIL, otherwise you will receive an Invalid Serial Number message. Enter your information and click the Validate button.

If you need to buy a license, clicking the Purchase button will take your browser to the SplashCase™ purchase page.

If you wish to use SplashCase™ in demonstration mode, click the Cancel button. SplashCase's features are fully functional in demo mode; a watermark will be placed on all output until SplashCase™ is activated.

SplashCase's Main window gives you an at-a-glance view of all of SplashCase's slide shows. To create a new setting, **click the "Create Slideshow Settings..." button** in the lower right of the Control Window. This will bring up the Settings Wizard Window if this is your first time setting up SplashCase™.

The Setup Wizard will walk you through the setup process, step by step. Instead of covering the Setup Wizard, we will discuss the individual items used to create your settings.

There are a few items that must be set in order for SplashCase™ to process photos.

Select your Slide show Setting:

Your slide show setting dictates how SplashCase™ displays your photos. In the next section, we will discuss the specifics of creating a setting.

Choose a Slide show Folder:

SplashCase™ needs to know where to look for your photos. Select the folder where you wish SplashCase™ to build its slide show. Note that it is not necessary to have this folder populated with images in order to select.

Choose a Monitor: If you are running two or more monitors on your system, you have the option of choosing which display to run your slide show. If you have one monitor, this option will not be visible.

Set Slide show Duration: Your slide show speed can be set between 1 and 10 seconds. The default setting is 3 seconds.

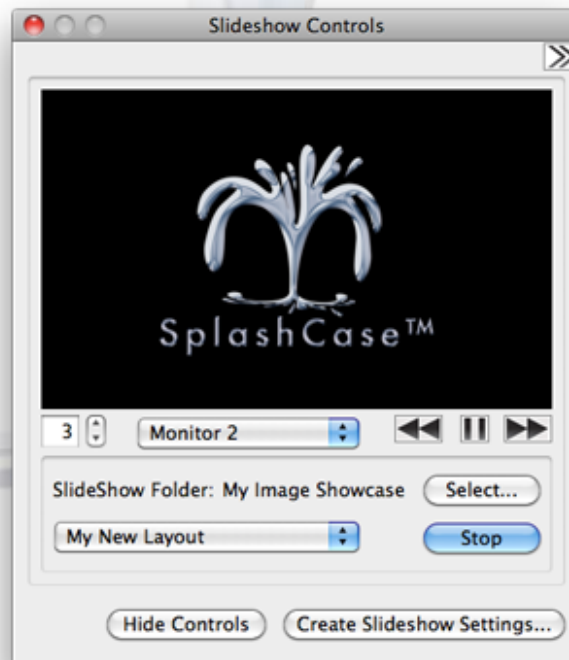
Play/Pause, Forward, Backward: Once your slide show is running, you can pause/play, step back, or step forward to another slide show page.

First Name:

Last Name:

email:

Serial Number:





SplashCase™ Components: Display Grid

Creating a Slide show Setting

In your settings window, you'll have access to a host of controls that will shape your slide show's appearance.

Image Shrink:

Image Shrink controls the space between your photos in the grid. By moving the Image Shrink Slider to the left, your photos will be larger and have less space between them. Moving the slider to the right increases the space between photos and will reduce the overall size of your photo.

Images Per Row:

Images Per Row controls how many images are displayed at a time. You can set your slide show to display your photos from one-up (one photo per slide show page) to ten photos per row.

The number of rows will depend on your monitor's resolution and aspect ratio; SplashCase will determine how many rows can be displayed automatically.

Maximize Height (One-Up only):

By default, SplashCase™ will display your Portrait and Landscape photos with equal pixel dimensions. Turning on the Maximum Height feature allows you to force your photos to display at the maximum height allowed by your monitor, proportionately scaling your images. With this feature, SplashCase™ will not crop any portion of your images.

Landscape Fill Screen (One-Up only):

Landscape Fill Screen will fill the entire monitor with your landscape oriented photo, though some cropping will occur. You can use this feature with the Maximize Height feature.

Drop Shadow:

You can easily add a subtle drop shadow to your photos, giving the appearance of depth to your slide shows. Note that drop shadows will not be visible on very dark backgrounds.

Feature Incoming Images:

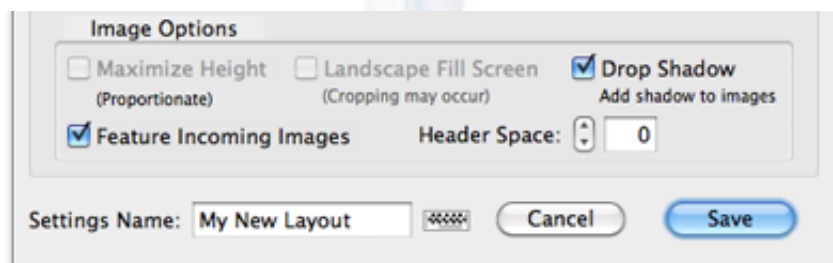
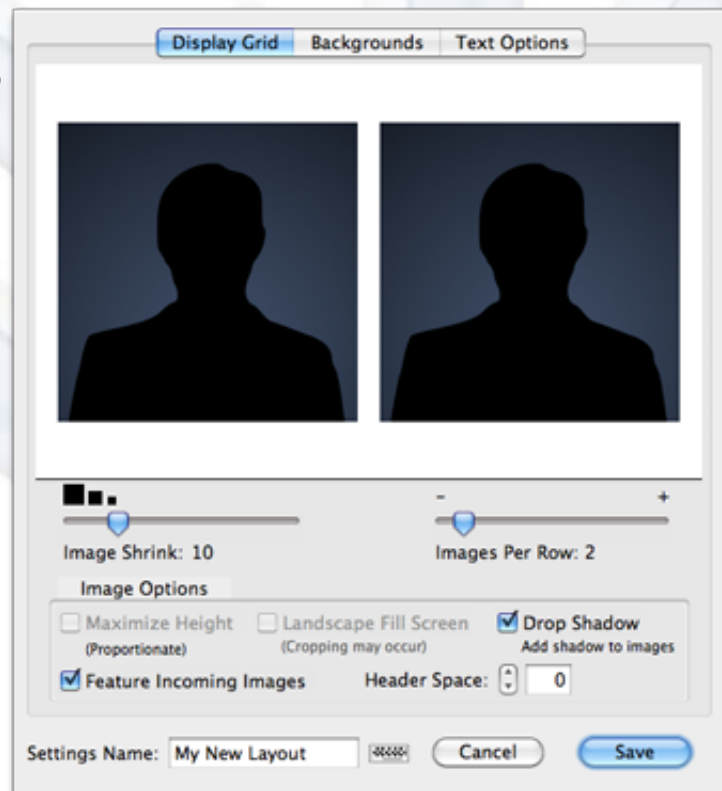
SplashCase™ creates and displays your photos in real-time. When turning on this feature, SplashCase™ will temporarily interrupt your current slide show to "feature" the new photos that it has detected. New photos are displayed in a One-Up fashion and will take on the attributes that you have set for your current slide show.

Header Space (in Pixels):

Adjusting your header space forces your slide show photo grid to begin below the value set (in pixels). This setting is ideal if you have a background with your logo displayed at the top of the page, but want to ensure that your slide show photos do not obscure it.

Settings Name:

Allows you to set a descriptive name to your slide show setting.





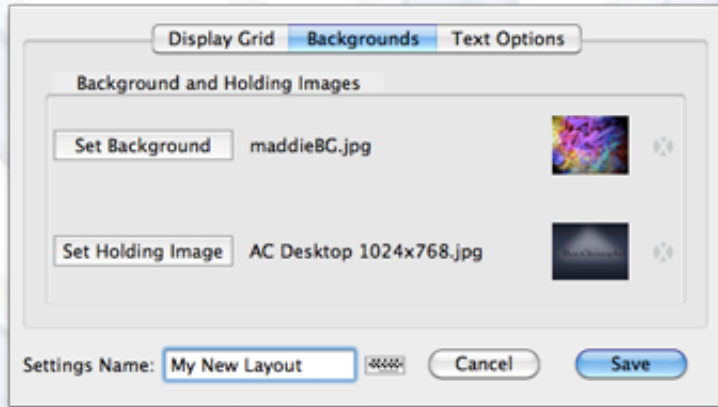
SplashCase™ Components: Background and Holding Images

Slide show Backgrounds

You may want to further personalize your slide shows by adding a custom graphic to your background or even add your logo in the header space.

Setting a Background:

First, you want to create a background to match the resolution and dimensions of the display you wish to run your slide show (800x600, 1024x768, etc.). Next, you'll want to be sure you save your background as a JPG.



Click the "Set Background" button and choose your background image. A thumbnail will show opposite the Set Background button. You can remove the background image by clicking on the round button marked with an "X" to the right of the background thumbnail.

Slide show Holding Images

You can personalize your slide show even further by setting a custom holding page. A holding page is a page that will show when no images are present in your slide show folder. This is a likely situation when you first begin your event.

Setting a Holding Image:

Like a background image, your holding image should match the resolution and dimensions of the screen you wish to display it on. A holding image must also be a JPG image.

Click the "Set Holding Image" button and choose your holding image. A thumbnail will show opposite the Set Holding Image button. You can remove the holding image by clicking on the round button marked with an "X" to the right of the holding image thumbnail.



SplashCase™ Components: Slide show Text Options

Text on Your Photos

With SplashCase™, you can easily tag your photos with file names and have control over attributes such as color, font, size, and weight.

Print File Names on Photos:

Select this option if you want to display file names on your photos.

Exclude Extension:

Selecting this option will remove the .JPG suffix from your file name.

Text Color:

Use the slider controls to choose your text color.

Text Attributes

- Set bold, underline, and italic attributes to your text.
- Option to use/exclude a black backing to your text.
- Choose your font.
- Set the font size.

Sample text can be viewed in the preview area and is updated as your attributes are changed.

